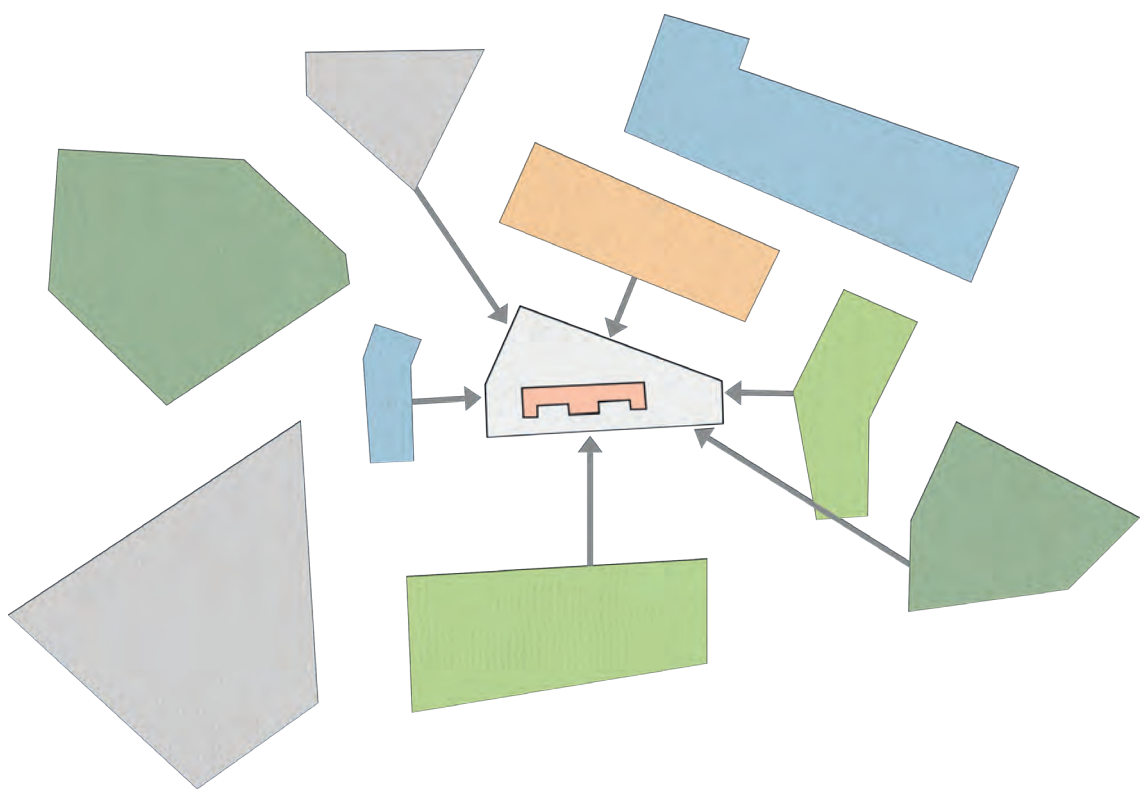
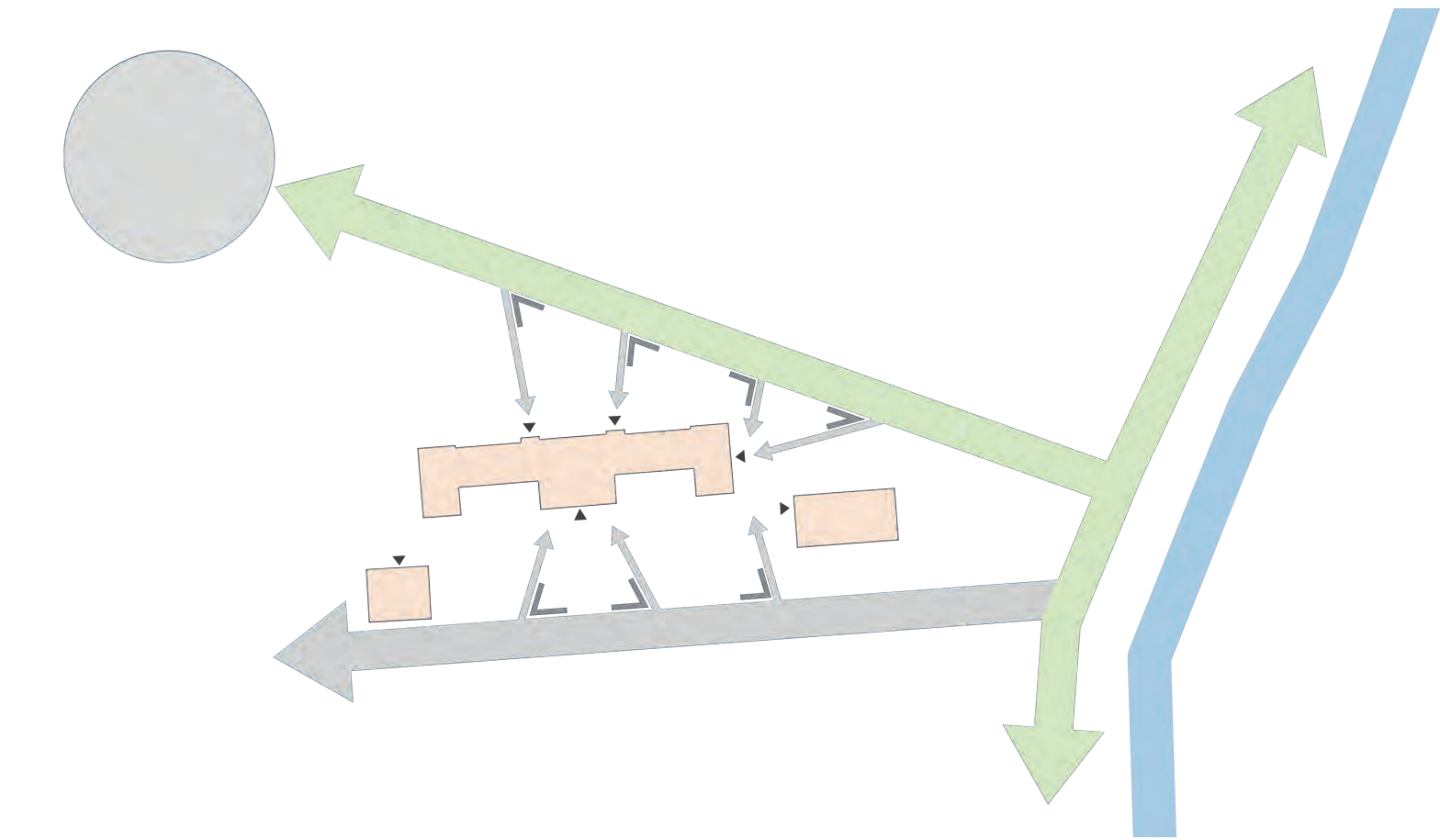


CONNECTING PATCHES

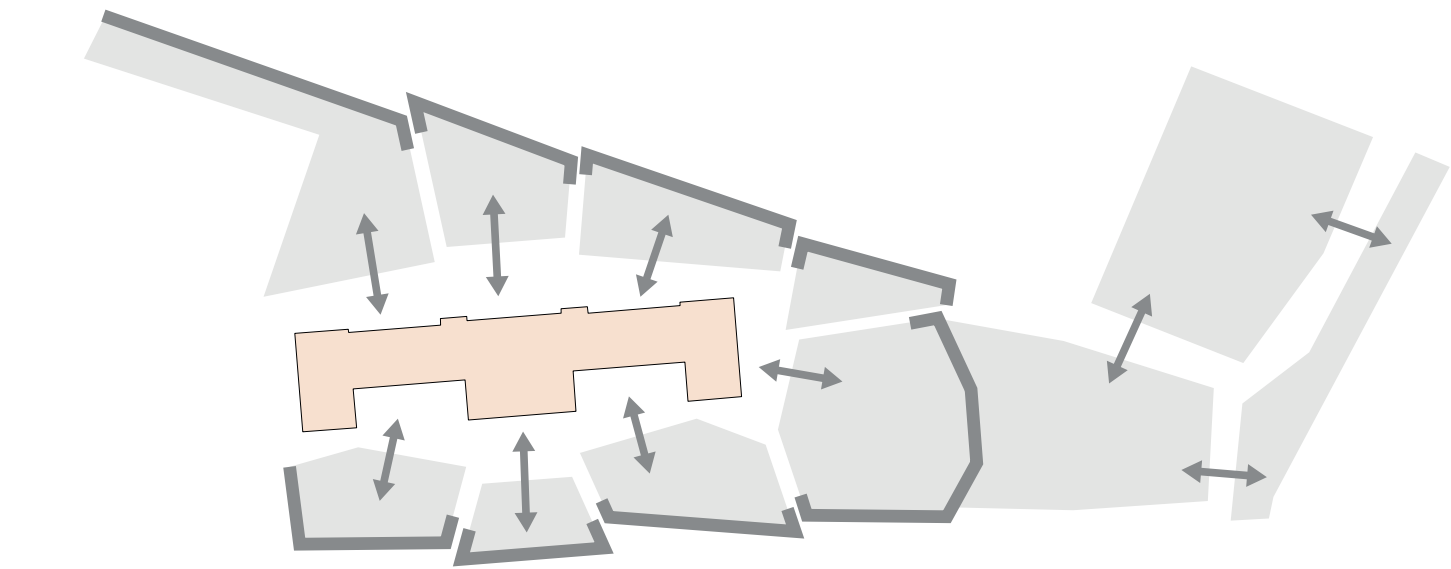
Schule am Zille-Park | Overall Concept



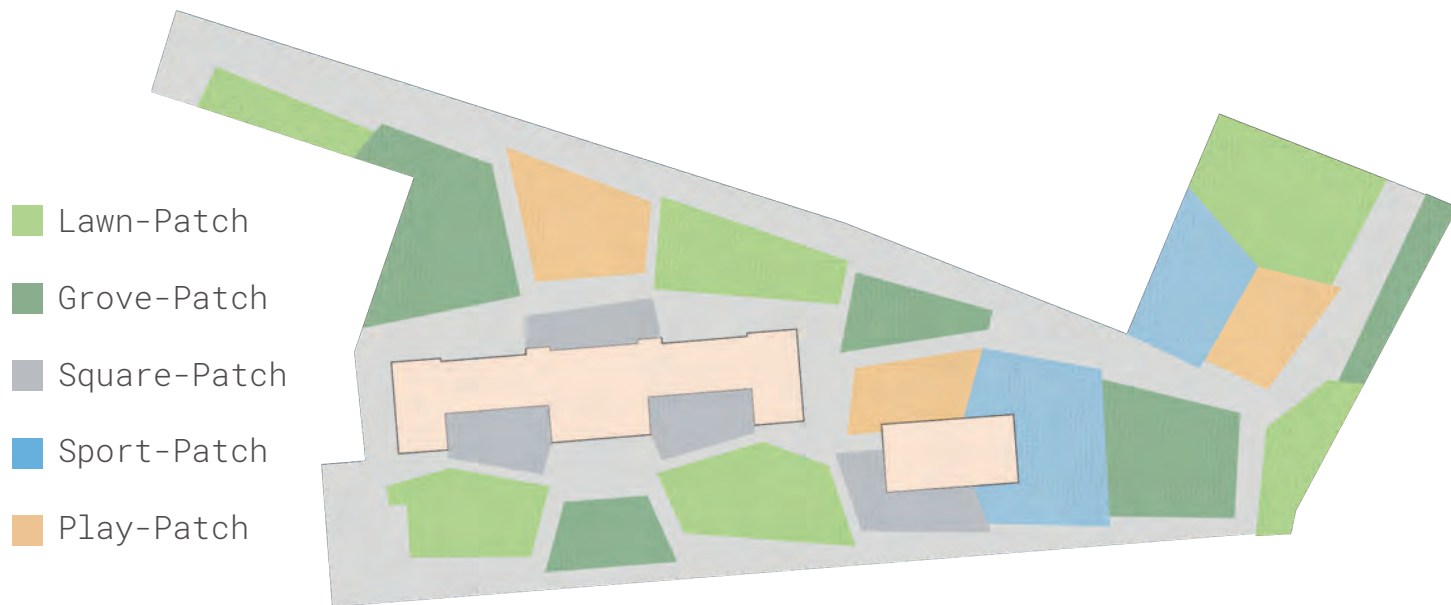
Derivation of the patches



Access in the area



Boundaries in the area



Area classification



Site plan - Scale 1:500



Sectional view A-A' - Scale 1:200



Sectional View B-B' - Scale 1:200



The school 'Schule am Zille-Park' is located in Berlin's Wedding district in the immediate vicinity of the Wedding S-Bahn station. The school grounds are adjoined to the north-west by Nettelbeckplatz and to the east by the open space of the Panke green corridor.

The surrounding neighbourhood is mixed and very diverse in its atmospheres and urban structures, but on the whole it is densely built-up and lacks publicly accessible open spaces.

Under the concept of a 24-hour courtyard, i.e. a schoolyard that can be used by the public all day, the schoolyard of the 'Schule am Zille-Park', which is currently still heavily locked, was redesigned and made accessible.

The design Connecting Patches develops its formal language from the diverse and heterogeneous urban structures of its immediate surroundings and picks them up in the form of patches. New access was created by a path connection at the northern edge of the schoolyard. This connects the open spaces of the Panke with Nettelbeckplatz and allows pedestrians and cyclists to move around in a relaxed and safe manner.

In particular, the area is opened up to the Panke green corridor and developed into a shared open space through the joint design. The designed patches are located between the public traffic areas and the school. The patches include raised lawns on one side, shady groves, playgrounds with exciting hilly landscapes, lowered sports fields and plaza areas.

As one passes the schoolyard, however, one is repeatedly led by the structural corners of the patches to smaller side paths that lead to the entrances of the school and thus draw the attention of frequent passers-by from the neighbourhood to the schoolyard as an open space.

In the direct vicinity to the school, a demarcation and thus passive boundary is evident through structural means, vegetation or topography to the surroundings. From the school and for the pupils, however, the patches are easily accessible. In the area along the Panke, on the other hand, the patches connect to the path and thus invite public use in the afternoon. Thus, a slight distribution of uses during the day can be achieved. For visitors from outside, it becomes clear that this is an area belonging to the school.

In addition, the boundaries of the schoolyard can also be shown to pupils. However, if there is increased pressure to use the schoolyard, the passive barriers can be overcome at any time; conversely, open spaces along the Panke can also be used for lessons.

The schoolyard thus becomes a connecting open space for different local user groups, at different times of day, with different usage requirements, and additionally offers a connecting place in the overarching urban open space complex.

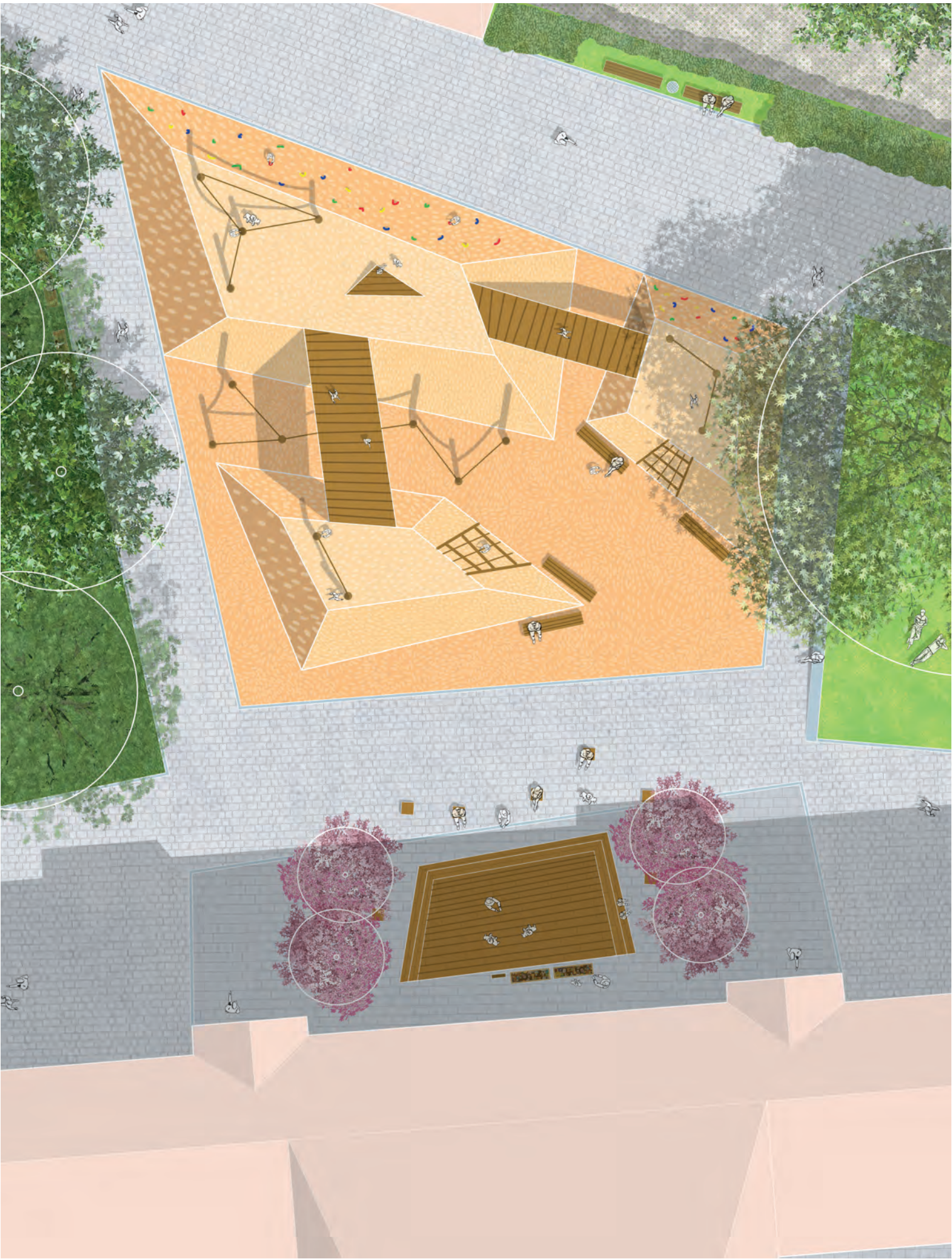


CONNECTING PATCHES

Schule am Zille-Park | Overall Concept



Use as a 24-H schoolyard



Site Plan - Scale 1:100



Site Plan - Scale 1:100

Individually designed uses are located on the individual patches.

Particularly exciting are topographically designed hill landscapes for play with climbing elements on the slope, bridges between the hills and niches in between for children to run through, allowing free and wild play.

On plaza-like paved areas, there are many places to sit at raised tree discs or at groups of tables that can also be used for outdoor lessons.

There is also a small stage behind the school building that can be used for lessons or small events in the neighbourhood.

In the shady areas of the groves, the school can implement small projects on the topic of nature and the environment; the school is still free to develop these areas for its own interests, and the desire for a garden project was also given space on one of the meadow areas. The other meadows can be used freely.

The sports areas offer various opportunities for school sports or recreational sports. The areas are lowered by 0.5m, thus providing a seating edge for spectators or for placing sports equipment or drinks.



Sectional view - Scale 1:100



Sectional view - Scale 1:100

The sports surfaces can also serve as evaporation surfaces during heavy rainfall events. The more heavily sealed areas are increasingly located directly at the school in order to withstand the heavy pressure of use during school breaks in the long term.

However, care was taken to unseal as much of the area as possible and to create shady, green places and opportunities for contact with urban nature and the river.

Efforts were made to reuse existing pavement and use as little demolition as possible. We also plan to use recycled concrete and use climatic trees and insect-friendly shrubs and perennials.



A raised lawn and playscape can be seen, both shielding pedestrians from the inner schoolyard and inviting them onto it.

Perspective view



A shady grove overlooking a playscape and a sports field in front of the sports hall can be seen. Here you can clearly see the heterogeneity of the design.

Perspective view