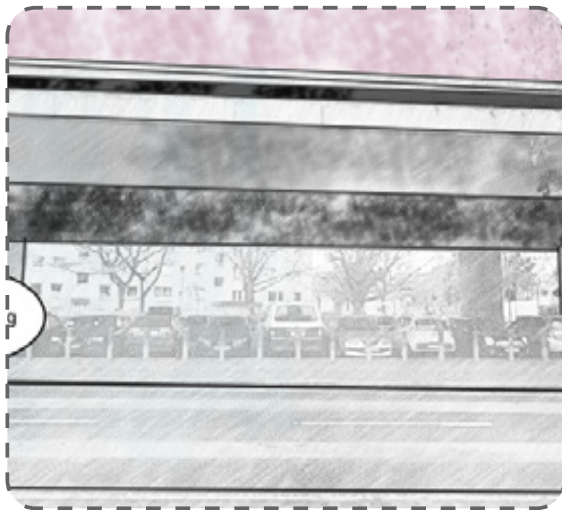


FUTURE RESILIENT LANDSCAPES

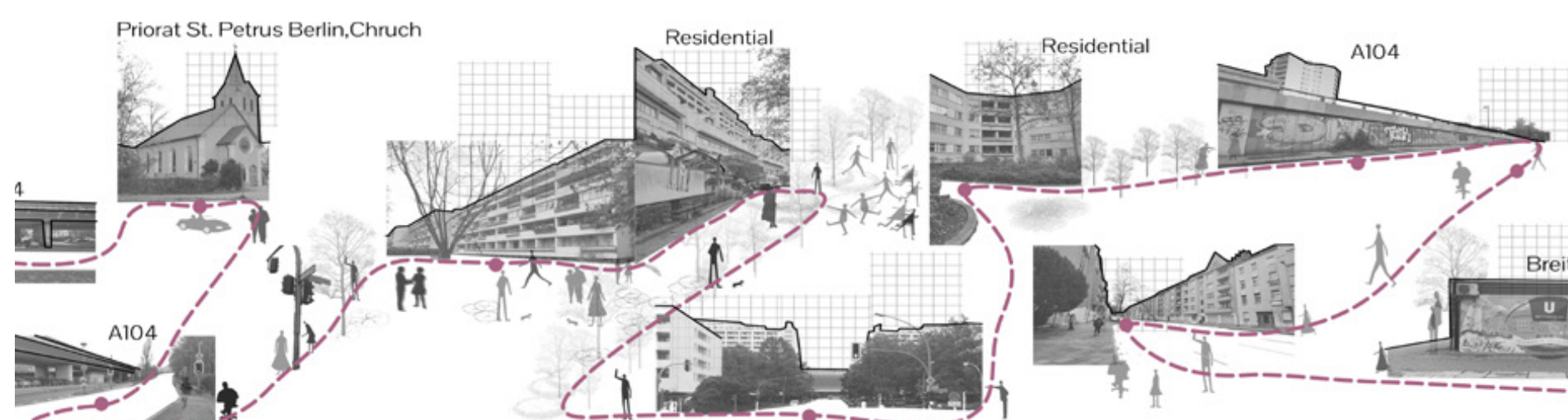
The design of a park over a bridge showcases a future resilient landscape by integrating sustainable features that address climate and ecological challenges. By incorporating green infrastructure such as rain gardens, green roofs, the park can effectively manage stormwater runoff, minimize the urban heat island effect, and enhance air quality. Furthermore, the park serves as a habitat for various plant and animal species, promoting biodiversity and ecological resilience in an urban environment. The innovative combination of infrastructure and nature creates a harmonious space that not only provides recreational opportunities but also contributes to a sustainable and resilient future.

Site: A 104, Berlin, Germany
Total area: 15,000.5 sqm

SITE ISSUES



MIND MAP



SECTION OF A104

